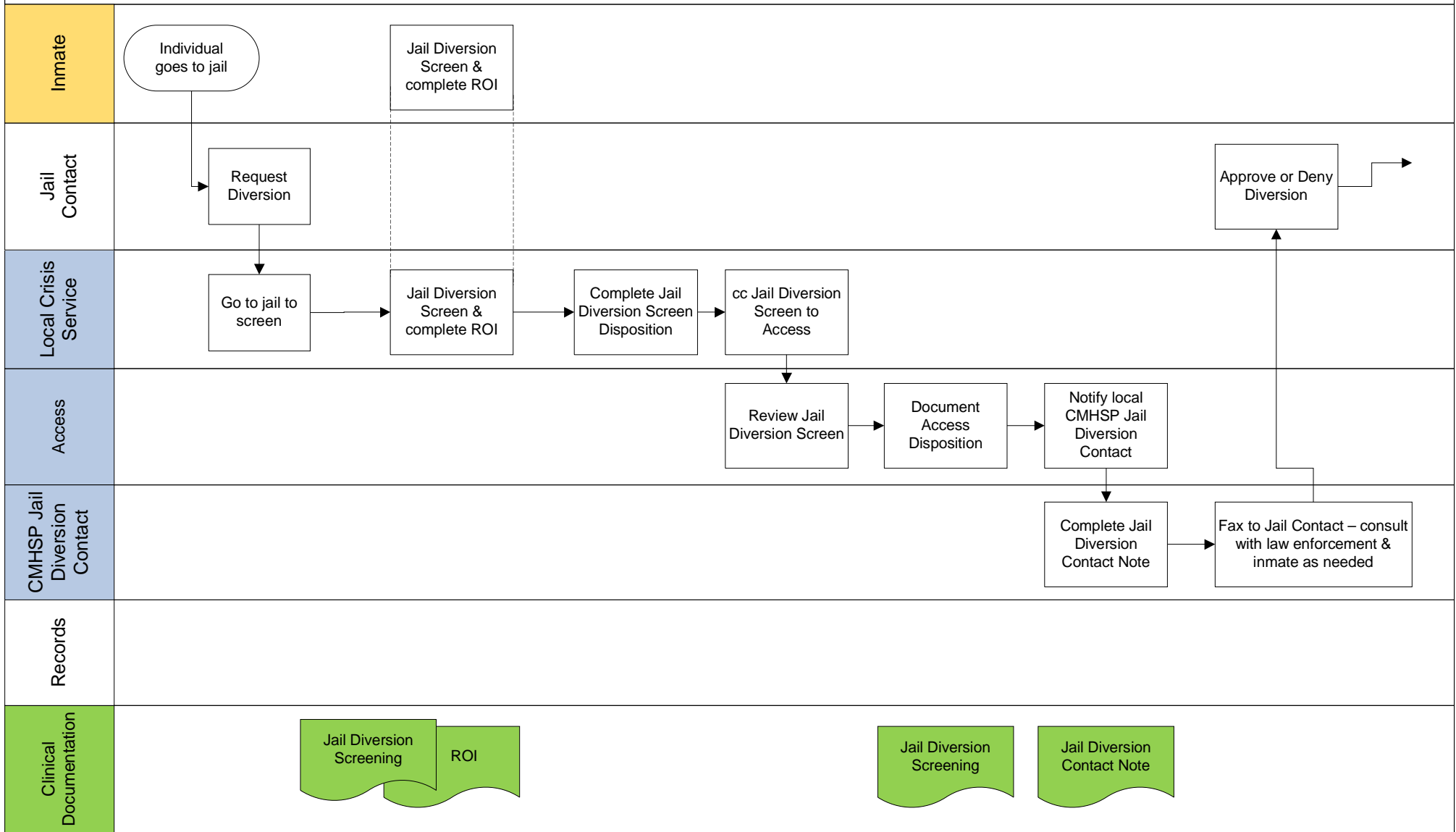


NorthCare Jail Diversion Screening – Adult, New Consumer v090910



NOTES:

- 1 – For an open consumer: local crisis clinician contacts primary clinician to do contact note.
- 2 – Request Diversion: jail contact will provide clear information about defense and any priors.
- 3 – SAL Jail Diversion Screening: face to face indirect
- 4 – SAL Jail Diversion Contact Note: indirect

NorthCare Jail Diversion Screening – Adult, New Consumer v090910

